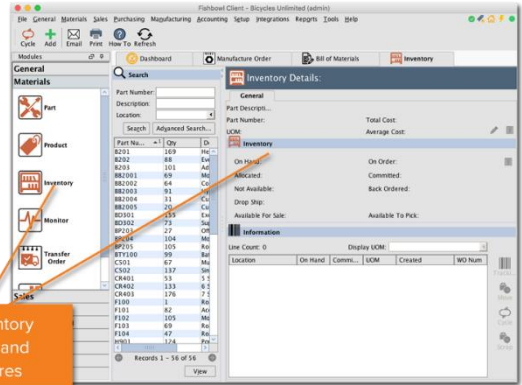


Inventory Management

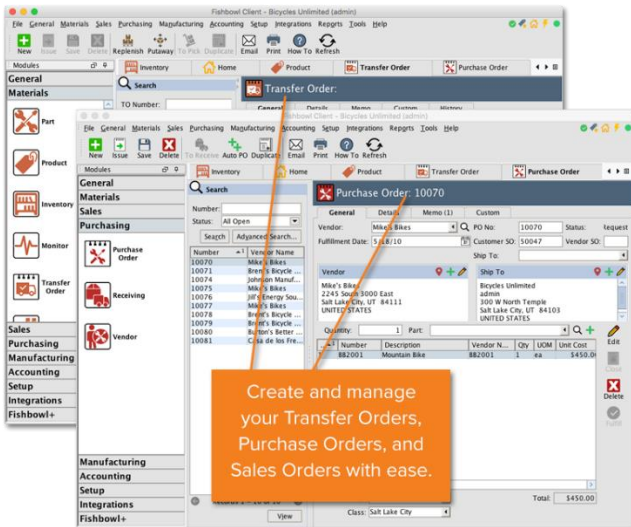
Inventory management is primarily what Fishbowl Warehouse is for. Fishbowl Warehouse offers advanced inventory management features to help your business manage multiple warehouses, track parts using a variety of criteria's.



Powerful inventory management and control features

Order Management

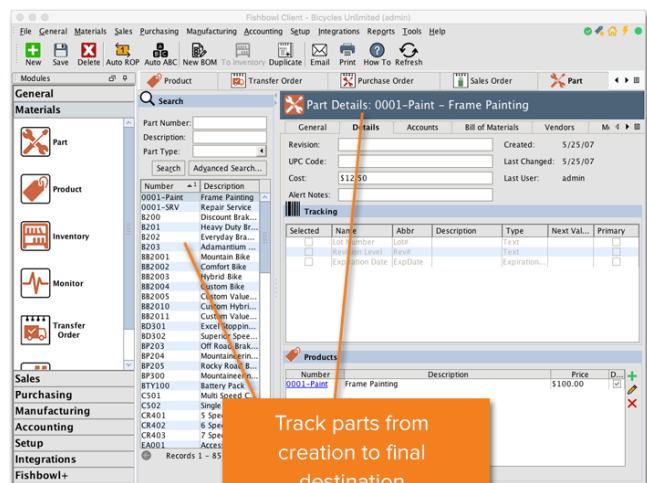
Create all of the purchase orders, sales orders, pick tickets and other essential documents you need with FBW. It makes order management much easier through its use of auto reorder points, in-depth reports, and improved warehouse management and picking processes



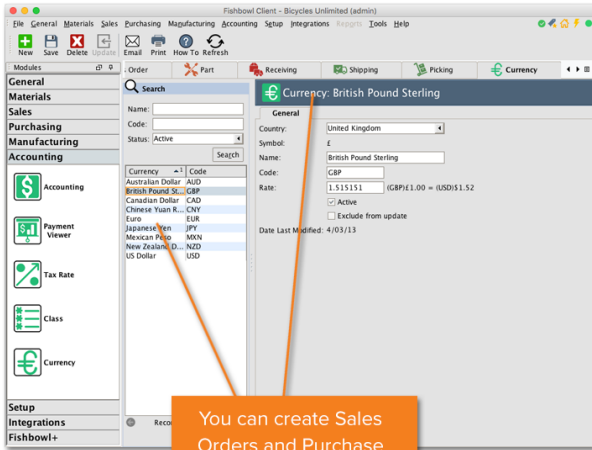
Create and manage your Transfer Orders, Purchase Orders, and Sales Orders with ease.

Part Tracking

FBM tracks each part's quantity and status on a per-location basis. Want to know how many raw materials and finished goods you have on hand? Simply check the Fishbowl database and that information will be right at your fingertips.



Track parts from creation to final destination



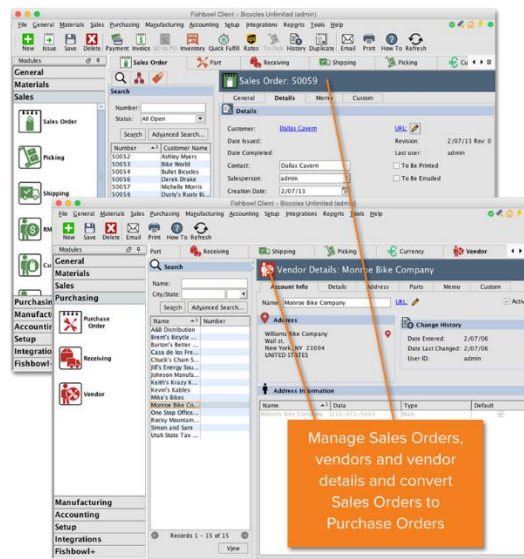
You can create Sales Orders and Purchase Orders in any currency

Multi-Currency

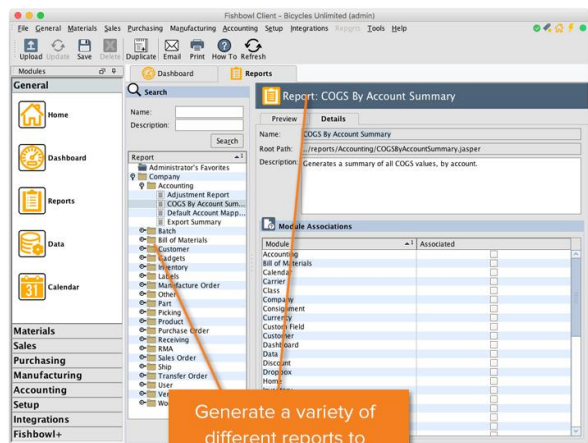
Multi-currency conversions are available in Fishbowl. This allows you to create and receive sales orders and purchase orders in any currency and then convert them into your home currency for accurate accounting and tax records.

Sales & Purchasing

Fishbowl's Sales Order module is so flexible you can use it to upgrade and customize products, save quick lists for speedy order fulfilment to returning customers, set up pricing tiers, and much more.



Manage Sales Orders, vendors and vendor details and convert Sales Orders to Purchase Orders



Generate a variety of different reports to easily spot trends

Reporting

Generate reports on everything in Fishbowl. Use Fishbowl's reporting features and plugins to create barcodes, organize sales and inventory data into graphs, forecast future inventory needs, and more.

Detailed Features

- | | |
|--|--|
| <ul style="list-style-type: none"> • Accounting solution integrations • Address validation • Adjust Prices wizard • Alternate bill of materials • Assembly work orders • Assign users to work orders • Auto commit and pick inventory • Auto export to QuickBooks (QB) • Auto purchase order • Auto refresh • Auto reorder points • Auto update (Client side) • Auto work orders • Auto-directed, best picking path • Available-to-build calculations • Barcode (scan, track, print) • Bill of materials item price adjustments • Bill of materials module • Bill of materials one-time use items • Bill of materials pick locations • Bill of materials pictures • Bill of materials statistics • Build-to-order work orders • Calendar module • Complete bill of materials breakdown • Configurable dashboard • Configurable SOs and POs • Configurable tax rates • Configurable work orders • Consignment tracking • Cost projections before WO completion • Cost-plus pricing • CSV imports/exports • Custom bill of materials types • Custom manufacture types • Custom payment terms • Custom settings • Custom shipping terms • Custom work orders • Customer balance check • Customer pricing rules • Customer purchase history • Cycle counting • Default work order locations • Drop shipping • Duplicate orders | <ul style="list-style-type: none"> • Forecasting • Grouped order picking • Landed cost management • Lead times • LIFO, FIFO picking, pick to clean • LIFO, FIFO, average & standard costing • Lot number Tracking • MO to PO conversion • Multi-currency • Multi-level bill of materials manufacturing • Multi-location part tracking • Multiple finished goods • Multiple ship-to addresses • Order picking • Outsource processing • Part monitoring • Pick, pack, and ship lists • Product pricing rules • Product substitution • Product/kit configurator • Purchase orders • QB integration (Pro, Premier, Enterprise, and QB Online) • QB Jobs (import, export, create) • Real-time inventory data • Receiving • Reconcile purchase orders • Repair work orders • Reports (industry-specific) • Reverse work orders • Revision level tracking • RMA tracking • Scheduled backups • Scheduled reports • Serialized tracking • SO to PO conversion • SO to WO conversion • Standard and configurable kitting • Tiered pricing rules • Vendor part numbers • Work order configuration-based pricing • Work order instructions • Work order locations • Work order priority • Work order scheduling |
|--|--|